

# FOR LEASE

## PROFESSIONAL OFFICE SPACE



914 Hartford Turnpike, Waterford, CT 06385

**FOR LEASE**  
**\$15/sf NNN**

Heather Gianacoplos  
heatherg@pequotcommercial.com

Judy Walsh  
jwalsh@pequotcommercial.com

**Pequot Commercial**

15 Chesterfield Road, Suite 4  
East Lyme, CT 06333  
860-447-9570 x153  
Fax 860-444-6661

- ≈ Highly visible Class A Office with elevator
- ≈ Great Location convenient to I-95 & I-395
- ≈ 23,700 Average Daily Traffic count
- ≈ Underground parking available with elevator access to all floors
- ≈ Public Water/Sewer; Propane

*1,270sf*  
*2nd floor*

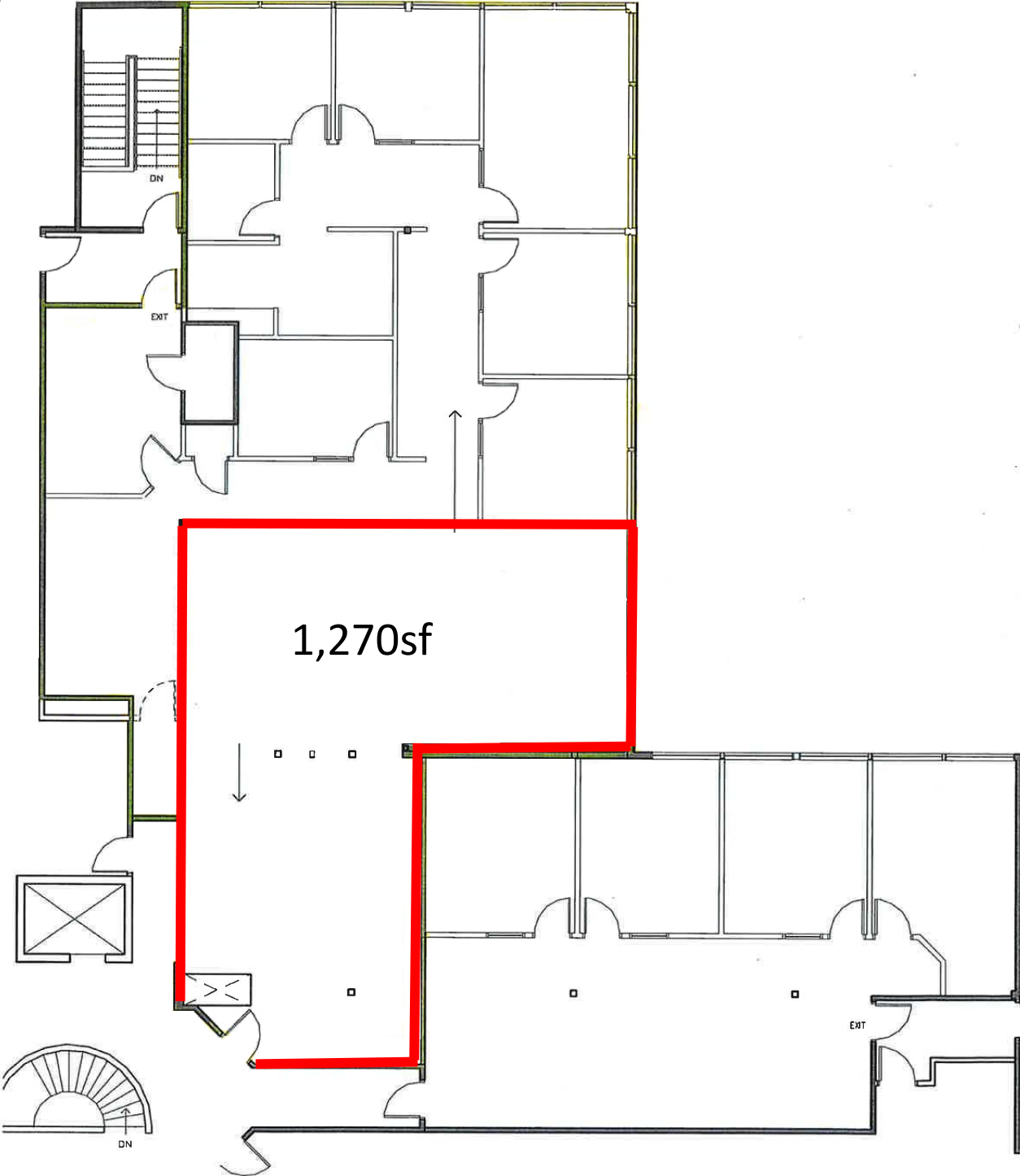


DEMOGRAPHICS	3 MILE	5 MILE	10 MILE
<b>Total Population</b>	24,382	74,718	155,007
<b>Total Households</b>	9,348	30,054	63,831
<b>Household Income</b> <b>\$0—\$30,000</b>	21.86%	20.11%	16.38%
<b>\$30,001-\$60,000</b>	19.37%	18.66%	17.13%
<b>\$60,001-\$100,000</b>	22.69%	23.29%	22.54%
<b>\$100,001+</b>	36.07%	37.93%	43.54%

Information deemed reliable but not guaranteed and offerings subject to errors, omissions, change of price or withdrawal without notice.

# Second Floor

1,270sf





Information deemed reliable but not guaranteed and offerings subject to errors, omissions, change of price or withdrawal without notice.